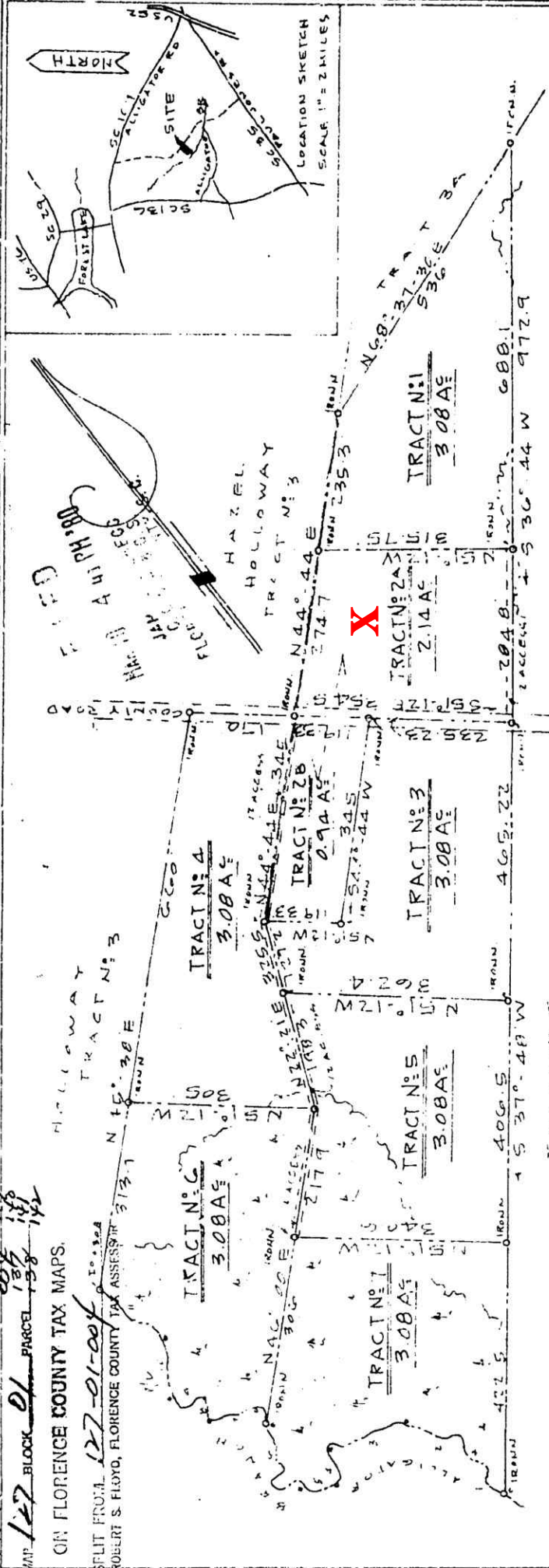


19-89

THIS PROPERTY DESIGNATED AS  
 MAP 127 BLOCK 01 PARCEL 158 142  
 ON FLORENCE COUNTY TAX MAPS.

SPLIT FROM 127-01-001  
 ROBERT S. FLOYD, FLORENCE COUNTY TAX ASSESSOR



BRANCH NITES	TRACT	NAME
1 N. 27° 56' E 85.6	1	LOU ANN MULBROW
2 N. 28° 14' W 127.5	2&2B	WILLIAM C. BROOKS
3 N. 71° 55' W 129	3	HAMPTON BROOKS
4 N. 27° 53' W 59.7	4	CARRIE JONES
5 N. 55° 06' W 56	5	MARVIN BROOKS
6 N. 08° 21' E 143	6	DELORIS MARYBROOKS
7 N. 64° 29' W 74.5	7	RUTH GEE
8 N. 27° 40' E 34		
9 N. 49° 00' W 55.5		
10 N. 20° 40' E 103.6		
11 N. 13° 30' W 131.8		

FLORENCE COUNTY  
 SOUTH CAROLINA

# SURVEY

TRACTS 4 AND 4B HAMF THOMAS ESTATE.  
 SEE MAP BY ERVIN ENGINEERING CO. DEC. 4, 1954

SURVEYED BY ERVIN ENGINEERING CO. INC.  
 FLORENCE, S.C. 511 W. EVANS ST. P.O. BOX 3 24503

SCALE 1" = 200' SEPT. 7, 1977



19-89